



M5 Test Handler

Flexible product test handling from high-mix to high volume production

At JOT, we're always working on new ways to make test handling faster and easier. That's why we created the M5 Test Handler. The M5 is perfect for high-mix and high-volume testing. The M5 also hits the sweet spot for any line that requires flexible PCB testing capabilities – especially when device size and speed matter.

Best of all, because it's part of the modular M-TestSystem, the M5 is truly scalable. The M5 utilizes the same

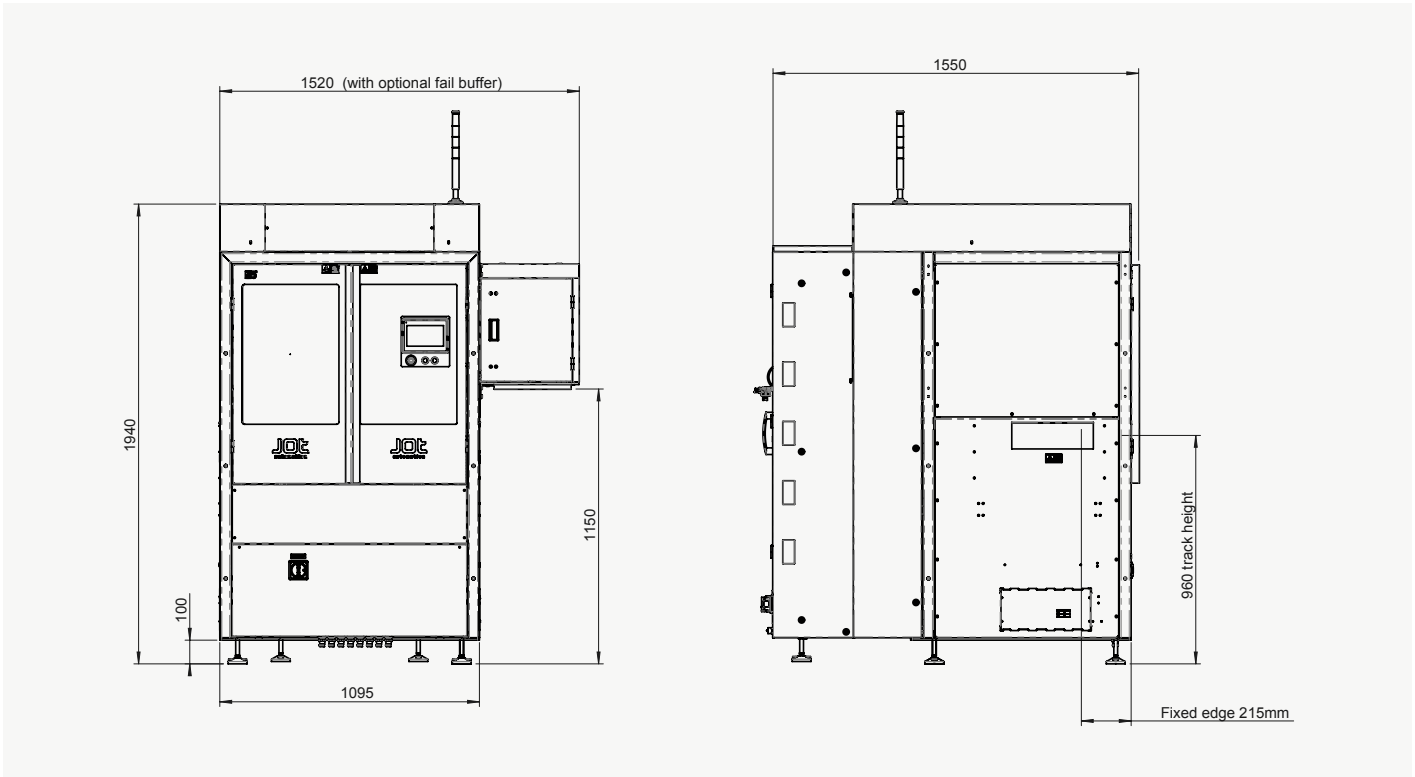
M-TestBoxes as the M1 Test Handler – making it yet another smart, flexible, and cost-effective choice for your ever-changing, and growing, testing needs.

Best advantage is achieved when test application is created by embedding measurement devices inside M box, e.g. flash application. Test system is then fully independent and exchangeable between automated handling system and manual workstations.

M5 Test Handler Highlights

- Simple, cost-effective way to automate PCB and pallet based testing
- Safe, reliable product handling
- Quick-adjust ease: no product-specific parts
- Faster handling of smart products
- Industry 4.0 autonomous interconnectivity
- Truly scalable for growing test needs
- Reusable, application-specific test boxes
- M-TestBoxes compatible with M1 handler
- Boxes are fully independent, just pull out from M5 rack and use in off-line testing
- Fail product separation to integrated magazine
- Spacious service-friendly construction
- Ergonomic workspace
- Touchscreen UI with base statistics and service capability
- Easy start-stop operability
- Automated width adjustment

M5 Test Handler, M10-1520



STANDARD FEATURES

- Max test box amount 5 pcs
- Max 2 test phases in one handler
- Automatic width adjustment
- Pass-through mode
- Max 50 saved product configurations
- IPC SMEMA 9851
- Basic statistics on UI
- Three user levels
- Serviceability supporting UI

TECHNICAL CHARACTERISTICS

Instrument rack:

Capacity:

- 20U space for test boxes
 - 5 x 4U box
 - 4 x 5U box

Dimensions: See drawings

OPTIONS

- Fail buffer
 - » Integrated at the handler outfeed side
 - » Including 2 pcs of CAB Testset 300
- Bypass conveyor when more than one M5 in line doing same test phase
- Return conveyor for empty carriers
- DUT identification
 - » Readiness for code reader integration

DEVICE UNDER TEST (DUT) SPECIFICATION

Max DUT size (L x W): 300 x 200 mm
 Min DUT size (L x W): 80 x 50 mm
 Max top side component height: 50 mm
 Max bottom side component height: 25 mm
 Max weight, panel conveyor: 1 kg
 Max weight, pallet conveyor: 2,5kg

INSTALLATION REQUIREMENTS

Power supply:

3ph 380-400 VAC / 50-60 Hz / 10 A

Compressed air connection:

0.6 MPa

Air consumption:

20 l/min

(excluding test boxes and optional bypass conveyor)